

The background is an abstract composition of watercolor washes in various shades of green and blue, ranging from light turquoise to deep forest green. Overlaid on these washes are white, expressive brushstrokes and splatters, some of which have a halftone dot pattern. The overall effect is textured and painterly.

Landscape like
Vincent Van Gogh

His early
work was
dark and
used muted
colors





The Poor and Money
Vincent van Gogh


Suffered from Mental Illness

- × Van Gogh spent time in psychiatric hospitals
- × Evidence suggests that he had bipolar depression and suffered from psychotic episodes and delusions
- × Poor diet and heavy drinking may have contributed to his mental health



Irises





*In 10 short years, he created over
2,000 works of art, including
around 860 oil paintings.*

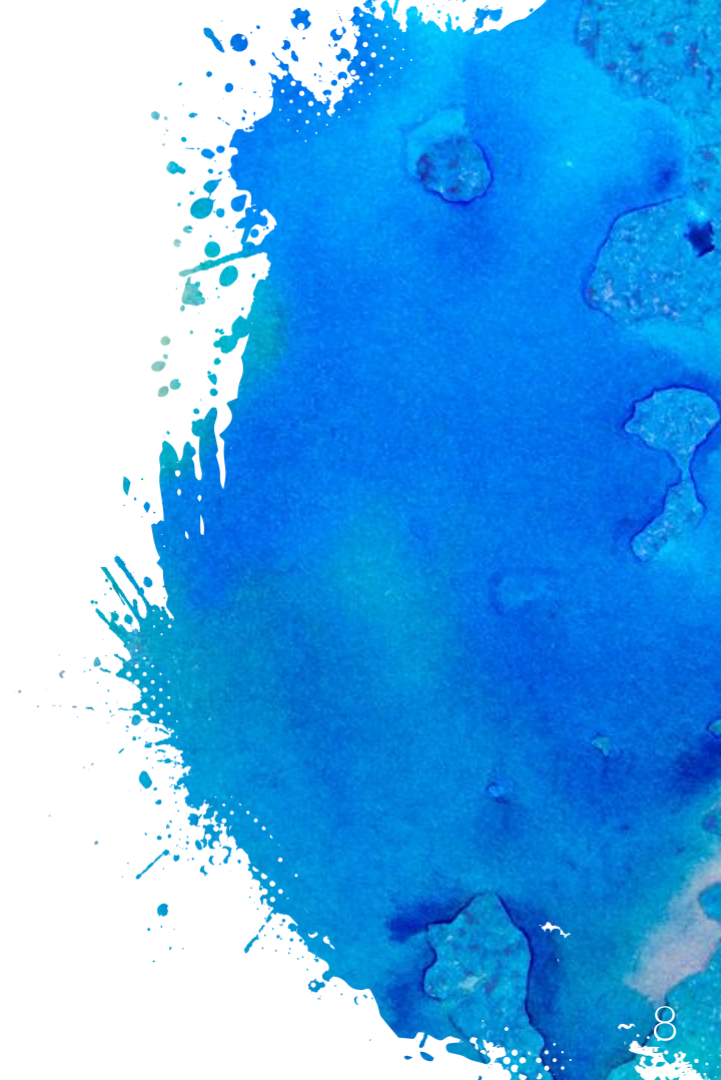


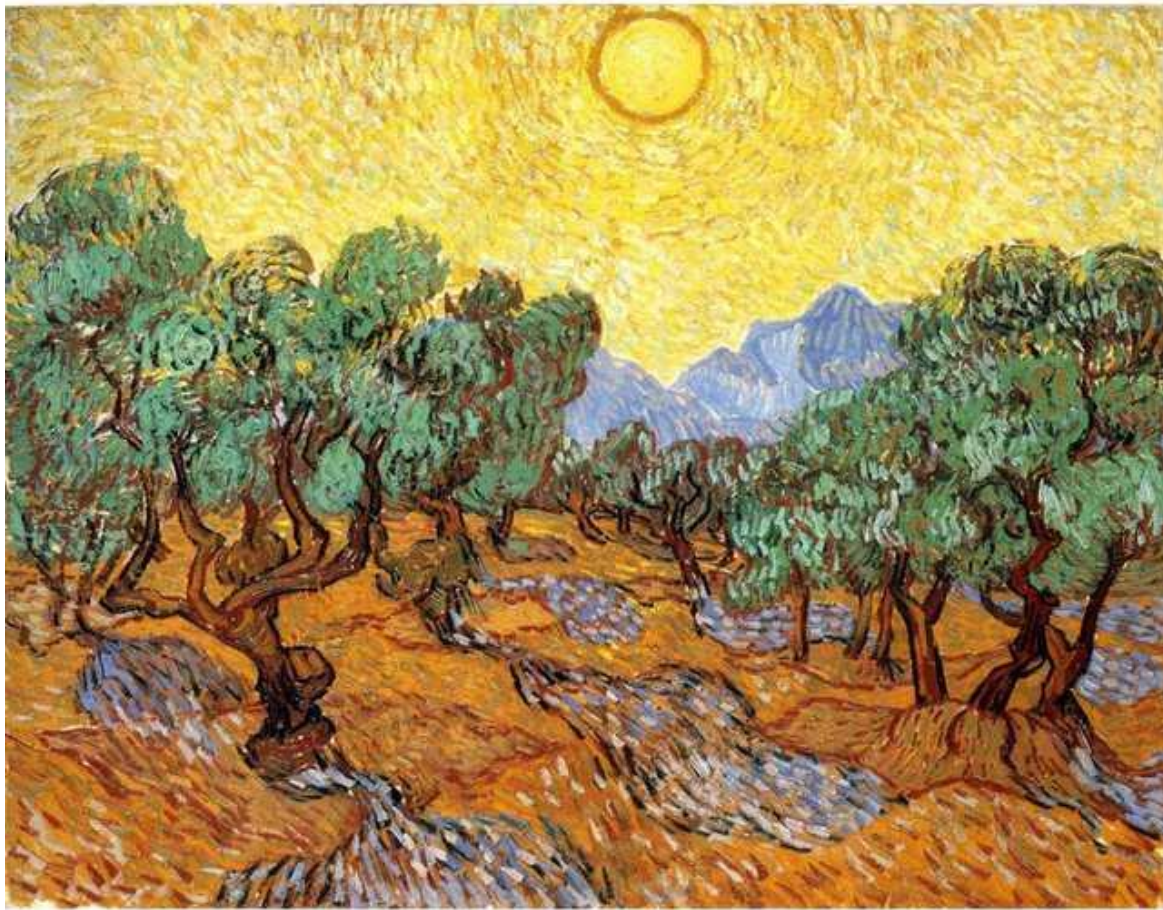
Plain Near Auvers



Van Gogh stayed close to home

But also painting the same spot at different times
of the year and/or different times of the day





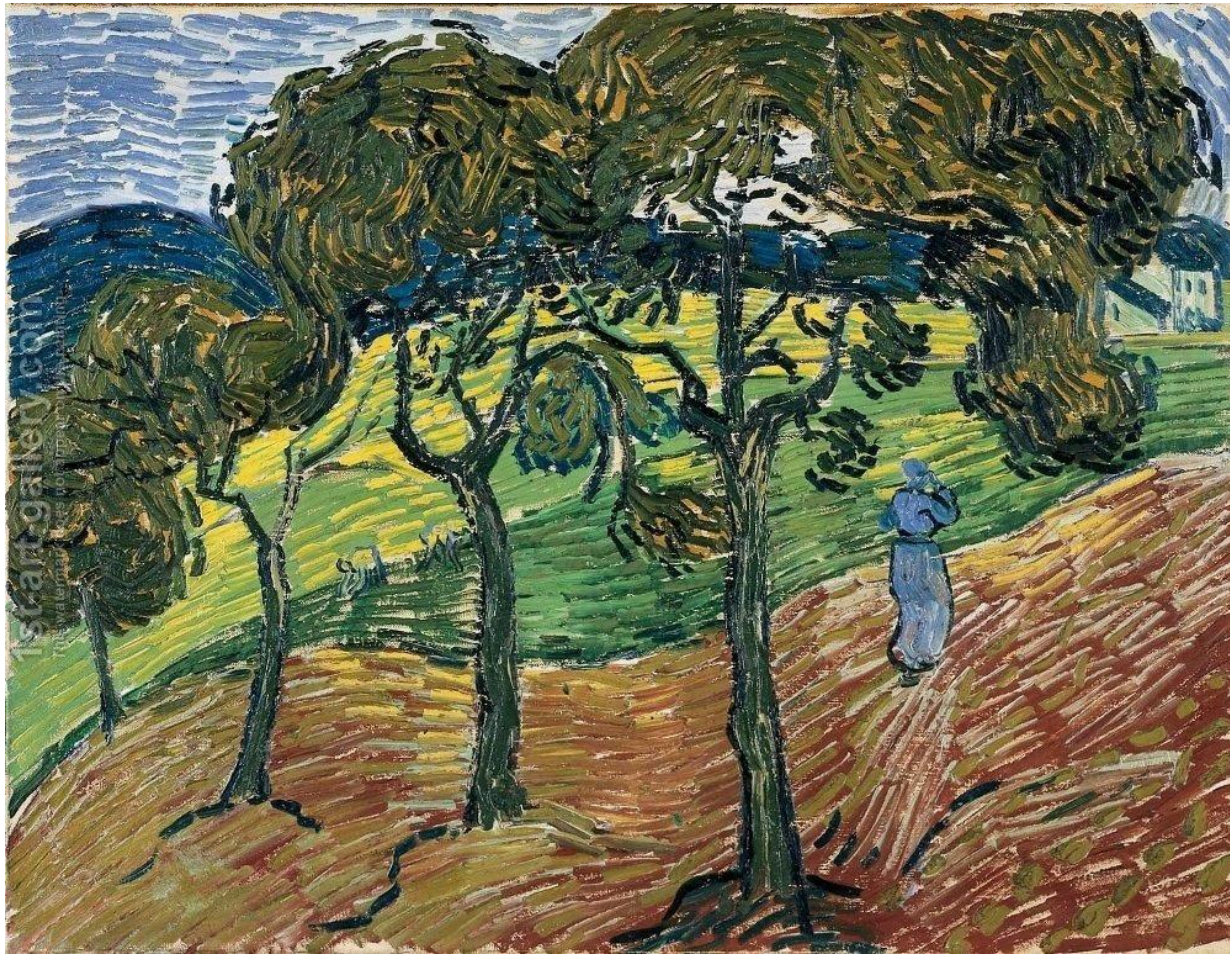
Olive Trees with Yellow Sky and Sun





Vincent van Gogh was 1 of 4 in the family

- × His Grandfather
- × His stillborn older brother
- × His brother Theo's son



Landscape with Trees and Figures



Lived with artist Paul Gaugain

- × Both Gaugain and van Gogh started painting later in life
- × Gaugain challenged van Gogh to explore
- × Gaugain used very vivid colors in his work
- × They often painted the same thing which tormented them both



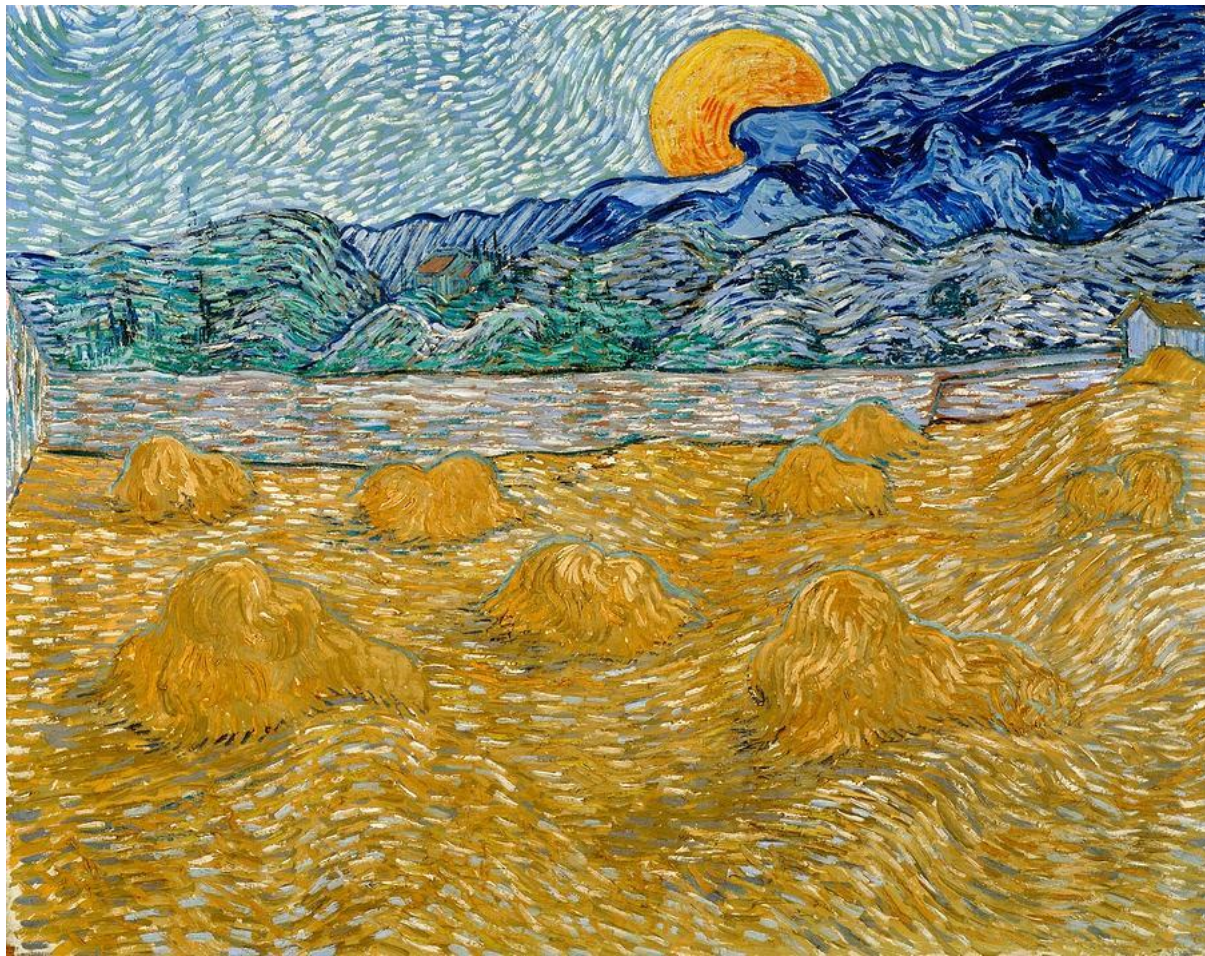


Les Alpes near Saint Remy





It's true.
He cut off his ear.



Wheat Sheaves and Rising Moon



After the ear cutting incident

Van Gogh was allowed to paint at home during the day but sleep at the asylum





Theo van Gogh

Was often the financial supporter of Vincent though
Vincent was the oldest



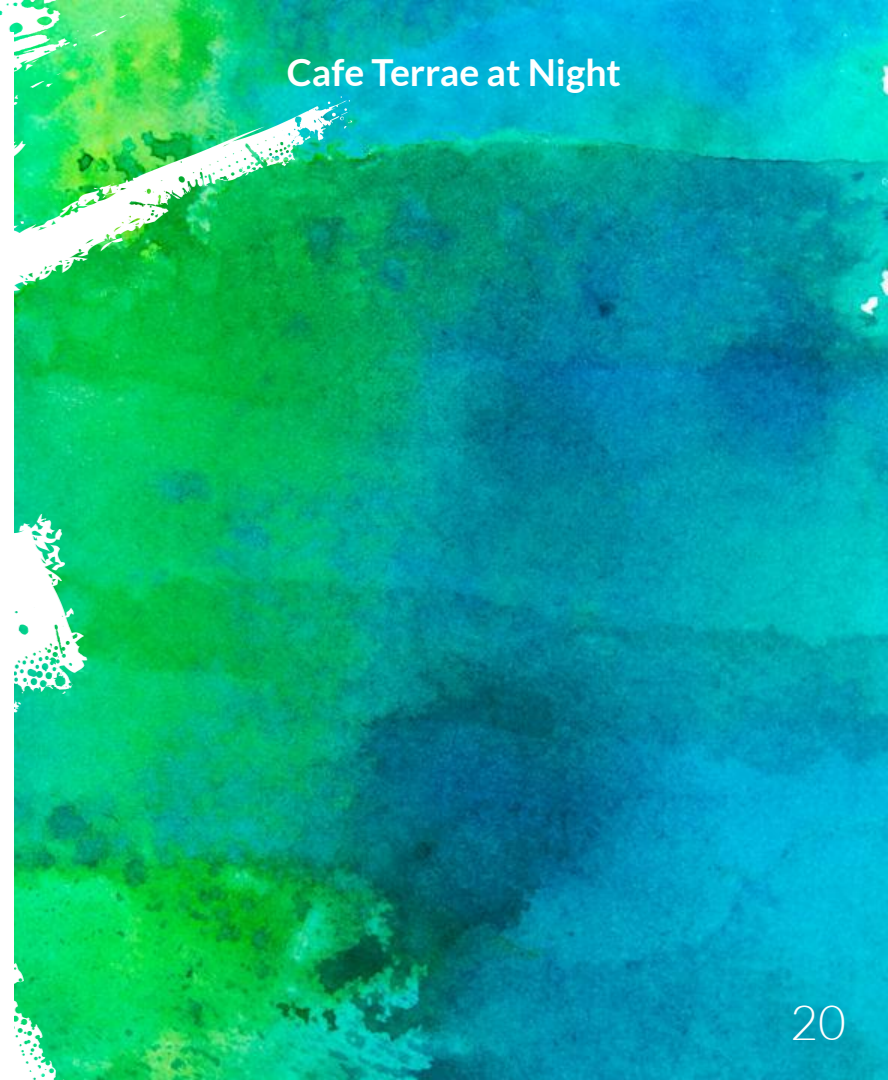
Starry Night




Starry Night was completed while he was living in an asylum in Saint Remy de Provence as he was recuperating from a nervous breakdown

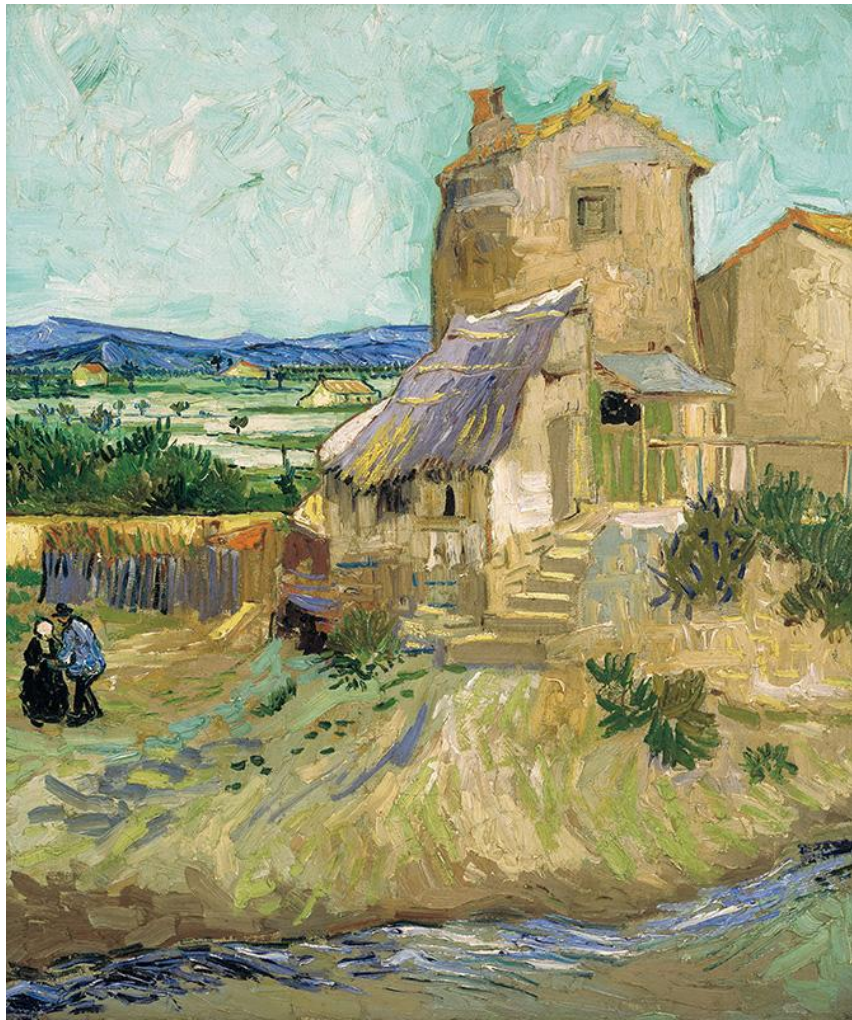


Cafe Terrae at Night





van Gogh was largely
self-taught, and only
received formal artistic
training for about 4
months a few years
before his death



Old Mill



The image features a dark, textured background with a white border. In the center, there is a white rectangular area containing the text "Now what?". The background has a mottled, almost painterly appearance with various shades of dark gray and black. The white border is slightly irregular, and the central white rectangle is also not perfectly uniform, blending into the dark background. The text "Now what?" is written in a bold, black, sans-serif font, centered within the white rectangle.

Now what?

Observe the landscape

EXPLORE your surroundings

Look from a variety of angles

Try exploring at different times of day

TAKE PHOTOS of the landscape you are in

SKETCH OUT plans based on your photos

